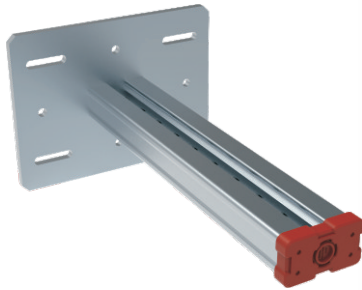


## Beam Bracket BB/BBV S50

The structural element for accommodation of pipe work and aggregates in industrial construction, plant construction and heavy-duty building technology.



### Installation

- Depending on the situation, different options are recommended:
- Directly to building structure: 4× suitable wall anchors and 4× suitable hexagon nut.
- To traditional steel beams between 80-310mm flange dimensions: With on-demand BP, 4× Girder Clamps Type AAF 16, 4× M16 DTI washer (ASME B 18.2.6) and 4× Hardened steel washer (ASTM F 436)

### Technical Data

- Material Composition:**  
Steel S275JR - EN 10025
- Surface Finish:**  
Hot-dipped galv. 55µm  
DIN EN ISO 1461

Type	Part-No.	Dimensions of Base Plate [mm]	For Flange Width [mm]	Length L [mm]	Slots in Base plate for	Weight [kg/pc]	Pack Size [pcs]
BB S50-A-500	30105050	240×240×12	75-120	500	M16	5.80	1
BB S50-A-750	30105075	240×240×12	75-120	750	M16	6.00	1
BB S50-A-1000	30105010	240×240×12	75-120	1000	M16	6.18	1
BB S50-B-500	30205050	280×240×12	121-160	500	M16	6.70	1
BB S50-B-750	30205075	280×240×12	121-160	750	M16	6.90	1
BB S50-B-1000	30205010	280×240×12	121-160	1000	M16	7.08	1
BB S50-C-500	30305050	320×240×12	161-235	500	M16	7.60	1
BB S50-C-750	30305075	320×240×12	161-235	750	M16	7.80	1
BB S50-C-1000	30305010	320×240×12	161-235	1000	M16	8.00	1
BB S50-D-500	30405050	420×240×12	236-300	500	M16	9.90	1
BB S50-D-750	30405075	420×240×12	236-300	750	M16	10.10	1
BB S50-D-1000	30405010	420×240×12	236-300	1000	M16	10.24	1
BBV S50-B-500	40205050	280×240×12	121-160	500	M16	6.70	1
BBV S50-B-750	40205075	280×240×12	121-160	750	M16	6.90	1
BBV S50-B-1000	40205010	280×240×12	121-160	1000	M16	7.08	1
BBV S50-C-500	40305050	320×240×12	161-235	500	M16	7.60	1
BBV S50-C-750	40305075	320×240×12	161-235	750	M16	7.80	1
BBV S50-C-1000	40305010	320×240×12	161-235	1000	M16	8.00	1
BBV S50-D-500	40405050	420×240×12	236-300	500	M16	9.90	1
BBV S50-D-750	40405075	420×240×12	236-300	750	M16	10.1	1
BBV S50-D-1000	40405010	420×240×12	236-300	1000	M16	10.24	1

