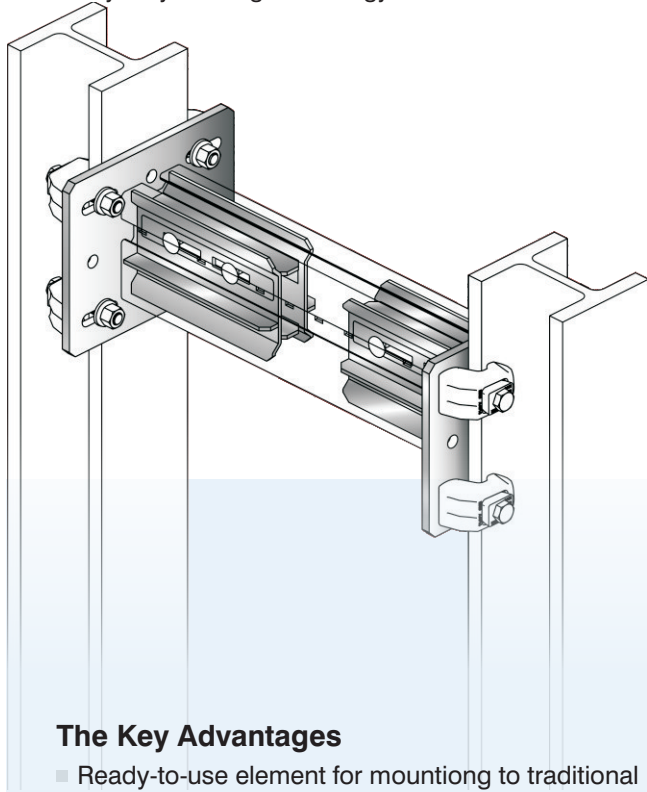


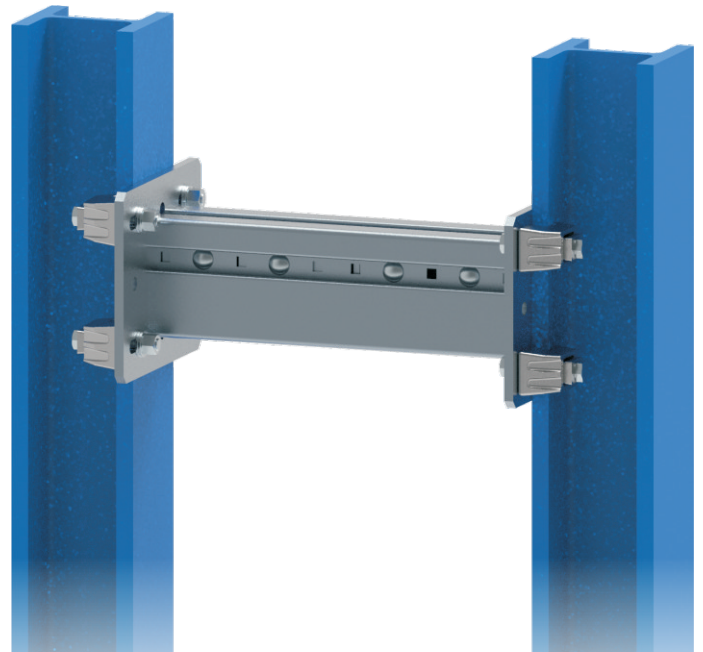
Beam Connector BC H150p

The structural element for accommodation of pipe work and aggregates in industrial construction, plant construction and heavy-duty building technology.



The Key Advantages

- Ready-to-use element for mounting to traditional steel beams, wall and floor as well as to ceiling, or for assembling crossbars with the respective connecting components.
- Any cut length of the Beam Section can be achieved.
- As a prefabricated cantilever support or beam bracket component to be fixed to steel beam with flange widths between 75-300mm by means of Girder Clamps Type AAF M16



Installation

Depending on the situation, different options are recommended:

Directly to building structure: 4 × suitable wall anchors and 4 × suitable hexagon nut.

To traditional steel beams between 80-310mm flange dimensions: With on-demand BP, 4 × Girder Clamps Type AAF 16, 4 × M16 DTI washer (ASME B 18.2.6) and 4 × Hardened steel washer (ASTM F 436)

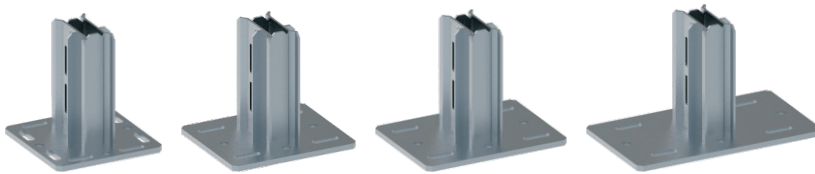
Technical Data

Material Composition:

Steel S275JR - EN 10025

Surface Finish:

Hot-dipped galv. 55µm DIN EN ISO 1461



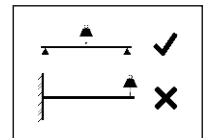
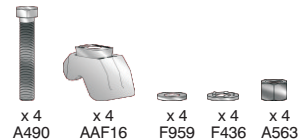
Type BC H150p-A

Type BC H150p-B

Type BC H150p-C

Type BC H150p-D

Hardware included per part



Type	Part-No.	Dimensions of Base Plate [mm]	Beam Section	Slots in Base plate for	Weight [kg/pc]	Pack Size [pcs]
BC H150p-A	31415101	240×240×12	AF S150	M16	8.69	1
BC H150p-B	31415102	280×240×12	AF S150	M16	9.59	1
BC H150p-C	31415103	320×240×12	AF S150	M16	10.50	1
BC H150p-D	31415104	420×240×12	AF S150	M16	12.75	1