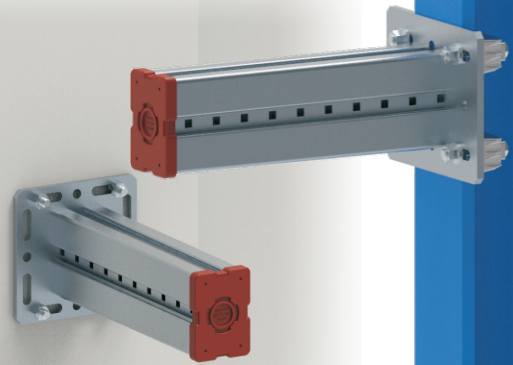
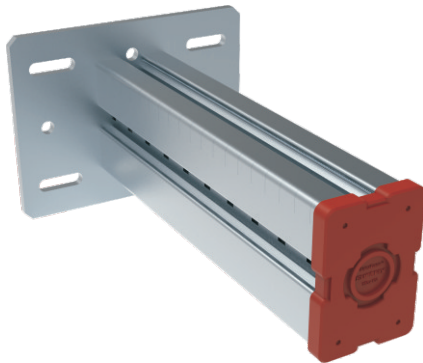


## Beam Bracket BB S150

The structural element for accommodation of pipe work and aggregates in industrial construction, plant construction and heavy-duty building technology.



### Installation

- Depending on the situation, different options are recommended:
- Directly to building structure: 4×suitable wall anchors and 4×suitable hexagon nut.
- To traditional steel beams between 80-310mm flange dimensions: With on-demand BP, 4×Girder Clamps Type AAF 16, 4×M16 DTI washer (ASME B 18.2.6) and 4× Hardened steel washer (ASTM F 436)

### Technical Data

- **Material Composition:**  
Steel S275JR - EN 10025
- **Surface Finish:**  
Hot-dipped galv. 55µm  
DIN EN ISO 1461

Type	Part-No.	Dimensions of Base Plate [mm]	For Flange Width [mm]	Length L [mm]	Slots in Base plate for	Weight [kg/pc]	Pack Size [pcs]
BB S150-A-500	30115050	240×240×12	75-120	500	M16	15.84	1
BB S150-A-750	30115075	240×240×12	75-120	750	M16	21.05	1
BB S150-A-1000	30115010	240×240×12	75-120	1000	M16	26.27	1
BB S150-B-500	30215050	280×240×12	121-160	500	M16	16.74	1
BB S150-B-750	30215075	280×240×12	121-160	750	M16	21.95	1
BB S150-B-1000	30215010	280×240×12	121-160	1000	M16	27.17	1
BB S150-C-500	30315050	320×240×12	161-235	500	M16	17.65	1
BB S150-C-750	30315075	320×240×12	161-235	750	M16	22.86	1
BB S150-C-1000	30315010	320×240×12	161-235	1000	M16	28.08	1
BB S150-D-500	30415050	420×240×12	236-300	500	M16	19.9	1
BB S150-D-750	30415075	420×240×12	236-300	750	M16	25.11	1
BB S150-D-1000	30415010	420×240×12	236-300	1000	M16	30.33	1