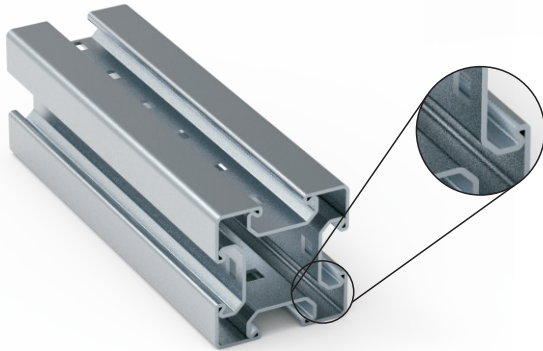


**Beam Section AF S90**

A modular steel framing system designed to make up supporting for cable trays, pipes, and support structures in heavy-duty building technology such as for industrial construction, plant construction, building catwalks, work platform etc.



**The Key Advantages**

- A modular steel work support system provides an easy-to-install, adjustable, flexible solution for industrial and heavy commercial applications.
- Four-sided continuous fastening groove Beam Section AF S90 creates unique features of flexible arrangement of accessories and fastening components.
- Efficient installation due to the prefabricated structural components.
- For erecting safe structures due to the high load-bearing capacity of the sections.
- The high torsional resistance shape achieved by a totally closed profile design.
- The structural elements and pipe supports can be attached on all four-and-two-sided continuous fastening groove with virtually no placement

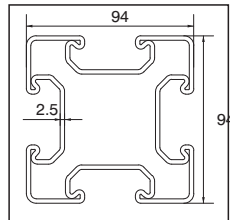
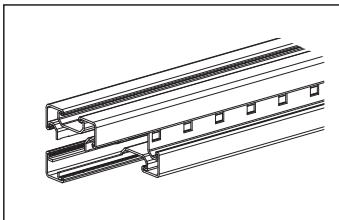
restrictions.

- High tension T-head Bolt specially designed for quickly connecting all components.
- Saving time and money with the functional accessories that are matched to the section.
- High level hot-dipped galvanized corrosion protection.
- Compatible with generic strut system.

**Technical Data**

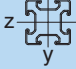
- **Material Composition:**  
Steel S275JR - EN 10025
- **Surface Finish:**  
Hot-dipped galv. 55µm DIN EN ISO 1461

➤ Model and designs are patented by **EUROFIX®**.

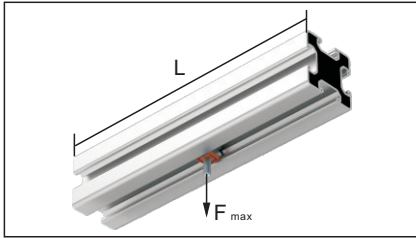


Section	Part-No.	Length L [mm]	Thickness T [mm]	Weight [kg/pc]	Pack Size [pcs]
AF S90	21109003	3,000	2.5	35.22	1
AF S90	21109006	6,000	2.5	70.44	1

Overview Technical Values

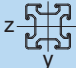
Section 	Available T-head bolt	Section Weight [kg/m]	Cross-section [cm²]	Material yield strength [Mpa]	Elasticity Modulus [Gpa]	Shear Modulus [Gpa]	Moment of inertia		Section modulus		Radius of Gyration	
							I <sub>y</sub> [cm⁴]	I <sub>z</sub> [cm⁴]	W <sub>y</sub> [cm³]	W <sub>z</sub> [cm³]	R <sub>y</sub> [cm]	R <sub>z</sub> [cm]
AF S90	M12	12	15.39	275	210	81	160.77	160.77	34.21	34.21	3.23	3.23

Max. permissible point load [N]

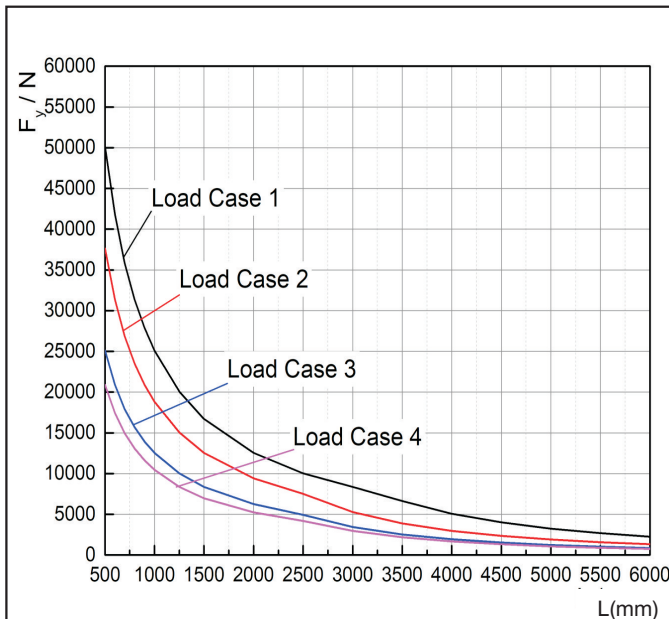


Length [mm]	Max. permissible point load [N]
500	8000

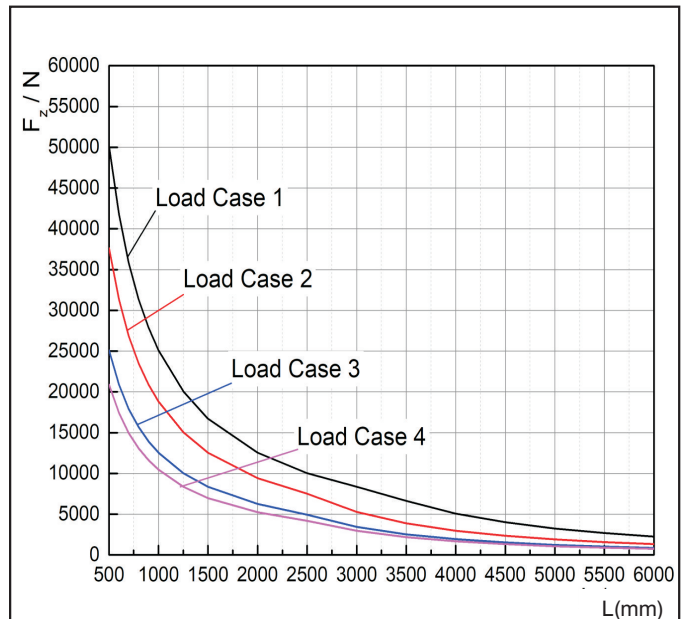
Max. load capacities [N]

Section 	Case1 L[m]				Case2 L[m]				Case3 L[m]				Case4 L[m]			
	0.5	1.0	1.5	2.0	0.5	1.0	1.5	2.0	0.5	1.0	1.5	2.0	0.5	1.0	1.5	2.0
AF S90-F <sub>y</sub>	50,170	25,090	16,720	12,540	37,630	18,820	12,540	9,410	25,090	12,540	8,360	6,270	20,910	10,450	6,970	5,230
AF S90-F <sub>z</sub>	50,170	25,090	16,720	12,540	37,630	18,820	12,540	9,410	25,090	12,540	8,360	6,270	20,910	10,450	6,970	5,230

- At the stated values, the permissible steel stress of 160 N/mm² must not exceed and the maximum deflection under load L/200 must be taken into its own weight account.
- Load capacity values are valid for primarily static load.



AlphaFrame® Beam Section AF S90/2.5



AlphaFrame® Beam Section AF S90/2.5