

Art. 540

EFIX-STRUT™ 41mm (Pre-galvanised & HDG)

Application/Advantages

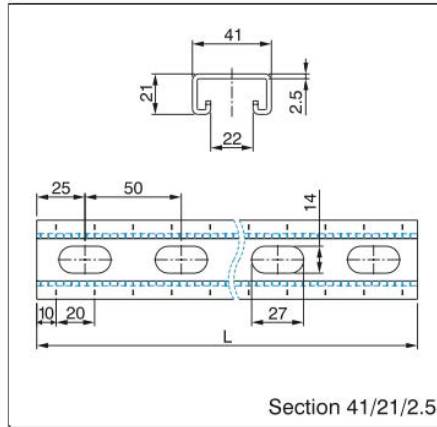
- For efficient pre-assembly of crossbars, wall brackets and support structures on-site or in workshops.
- Fast and efficient fixing of multiple and single pipes.
- High bending and tear-out strength due to optimized profile cross section.
- Ideal as support structure for air ducts.
- Versatile options for wall, floor and ceiling installation.
- Specially notched connecting parts allow for easy, secure and versatile assembly of load-bearing constructions.
- Scale marks allow for simplified alignment of fastening elements during installation, and facilitate measuring and cutting to the length of the section on-site

Technical Data

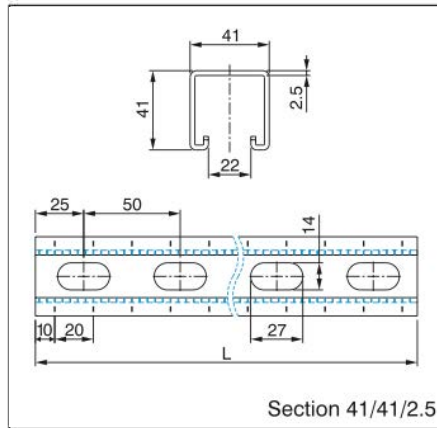
- **Material:**
Steel 1.0332 acc. to DIN EN 10111
- **Zinc plating:**
Pre-galvanised acc. to DIN EN 10327
Hot-dipped galv. acc. to DIN EN ISO 1461

Note

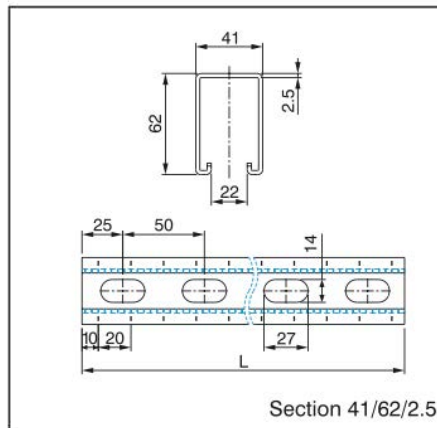
- Available at other strut lengths subject to request.
- Refer to the "Technical Information" section for load-bearing capacities.



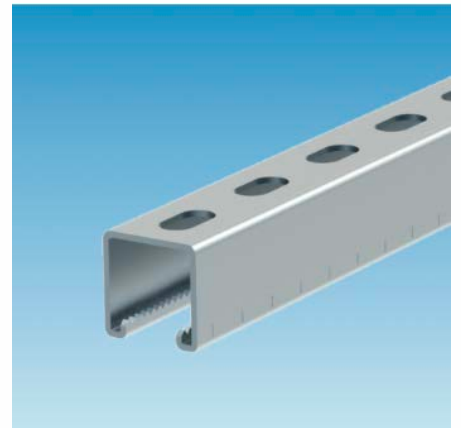
Section 41/21/2.5



Section 41/41/2.5



Section 41/62/2.5



Article Number		Section [mm]	Thickness [mm]	Length* L [m]	Weight [kg/m]	Pack Size * [pcs]
Pre-galvanised	Hot-dipped galv.					
0531 540 101	0531 540 304	41/21/2.5	2.5	2	1.88	—
0531 540 102	0531 540 305		2.5	3	1.88	—
0531 540 103	0531 540 306		2.5	6	1.88	—
0531 540 201	0531 540 604	41/41/2.5	2.5	2	2.67	—
0531 540 202	0531 540 605		2.5	3	2.67	—
0531 540 203	0531 540 606		2.5	6	2.67	—
0531 540 301	0531 540 704	41/62/2.5	2.5	2	3.50	—
0531 540 302	0531 540 705		2.5	3	3.50	—
0531 540 303	0531 540 706		2.5	6	3.50	—

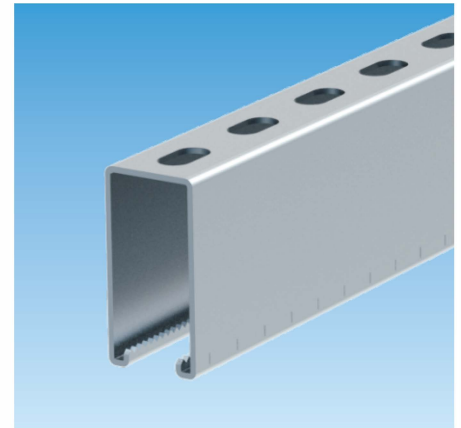
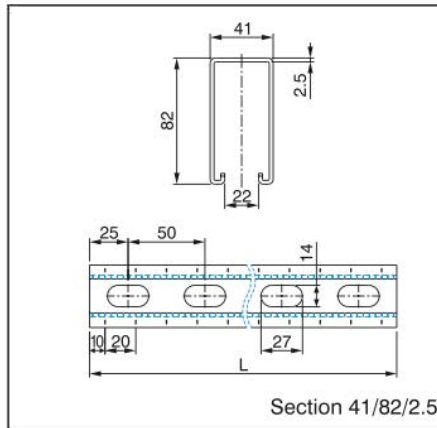
*Pack sizes are variable depending on customer's orders.

Art. 540

EFIX-STRUT™ 41mm (Pre-galvanised & HDG)

Application/Advantages

- For efficient pre-assembly of crossbars, wall brackets and support structures on-site or in workshops.
- Fast and efficient fixing of multiple and single pipes.
- High bending and tear-out strength due to optimized profile cross section.
- Ideal as support structure for air ducts.
- Versatile options for wall, floor and ceiling installation.
- Specially notched connecting parts allow for easy, secure and versatile assembly of load-bearing constructions.
- Scale marks allow for simplified alignment of fastening elements during installation, and facilitate measuring and cutting to the length of the section on-site.



Technical Data

- **Material:**
Steel 1.0332 acc. to DIN EN 10111
- **Zinc plating:**
Pre-galvanised acc. to DIN EN 10327
Hot-dipped galv. acc. to DIN EN ISO 1461

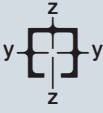
Note

- Available at other strut lengths subject to request.
- Refer to the "Technical Information" section for load-bearing capacities.

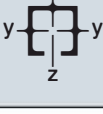
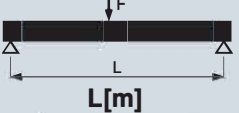
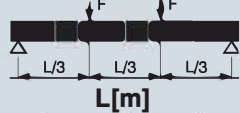
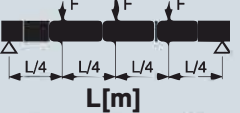
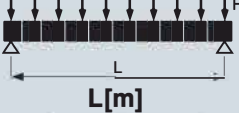
Article Number		Section [mm]	Thickness [mm]	Length* L [m]	Weight [kg/m]	Pack Size * [pcs]
Pre-galvanised	Hot-dipped galv.					
0531 540 701	0531 540 804	41/82/2.5	2.5	2	4.23	—
0531 540 702	0531 540 805		2.5	3	4.23	—
0531 540 703	0531 540 806		2.5	6	4.23	—

* Pack sizes are variable depending on customer's orders.

Technical Data
EFIX-STRUT™ 41mm (Pre-galvanised & HDG)
Technical data for sections:

Section 	Thickness [mm]	Available Rail Nuts	Section Weight [kg/m]	Cross Section [cm ²]	Resistance Moment		Moment of Inertia	
					Wy [cm ³]	Wz [cm ³]	Iy [cm ⁴]	Iz [cm ⁴]
41/21	2.5	M8,M10,M12	1.88	1.97	0.89	2.56	0.98	5.29
41/41	2.5	M8,M10,M12	2.67	3.06	2.96	4.41	6.19	9.05
41/62	2.5	M8,M10,M12	3.50	4.01	5.54	6.27	17.70	12.86
41/82	2.5	M8,M10,M12	4.23	4.73	8.89	8.05	37.12	12.57

Max. load capacities [N]

Section 	 L[m]				 L[m]				 L[m]				 L[m]			
	0.5	1.0	1.5	2.0	0.5	1.0	1.5	2.0	0.5	1.0	1.5	2.0	0.5	1.0	1.5	2.0
41/21/2.5	1440	501	223	126	1450	315	137	74	734	238	107	59	3011	840	372	209
41/41/2.5	4192	2095	1074	651	3143	1571	787	443	2573	1256	704	356	8384	4192	2147	1208
41/62/2.5	8151	3305	2404	1804	6113	3056	2047	1340	4074	2073	1416	936	16157	8150	5457	3556
41/82/2.5	12628	6314	3844	3157	9471	4736	2883	2368	6314	3157	1910	1579	2527	12628	7688	6314

Note:

- Refer to the "Technical Information" section for load capacities of 41 mm EFIX-STRUT™ series for larger spans.
- At the stated values, the permissible steel stress of 160 N/mm² must not be exceeded and the maximum deflection under load L/200 must be taken into its own weight account.