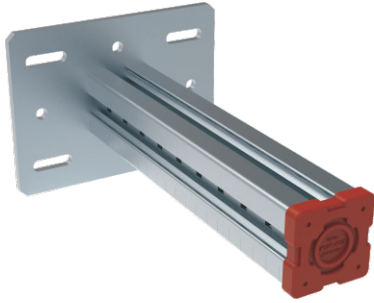


## Beam Bracket BB S90

The structural element for accommodation of pipe work and aggregates in industrial construction, plant construction and heavy-duty building technology.



### Installation

- Depending on the situation, different options are recommended:
- Directly to building structure: 4×suitable wall anchors and 4×suitable hexagon nut.
- To traditional steel beams between 80-310mm flange dimensions: With on-demand BP, 4×Girder Clamps Type AAF 16, 4×M16 DTI washer (ASME B 18.2.6) and 4× Hardened steel washer (ASTM F 436)

### Technical Data

- Material Composition:**  
Steel S275JR - EN 10025
- Surface Finish:**  
Hot-dipped galv. 55µm  
DIN EN ISO 1461

Type	Part-No.	Dimensions of Base Plate [mm]	For Flange Width [mm]	Length L [mm]	Slots in Base plate for	Weight [kg/pc]	Pack Size [pcs]
BB S90-A-500	30109050	240×240×12	75-120	500	M16	11.28	1
BB S90-A-750	30109075	240×240×12	75-120	750	M16	14.21	1
BB S90-A-1000	30109010	240×240×12	75-120	1000	M16	17.15	1
BB S90-B-500	30209050	280×240×12	121-160	500	M16	12.18	1
BB S90-B-750	30209075	280×240×12	121-160	750	M16	15.11	1
BB S90-B-1000	30209010	280×240×12	121-160	1000	M16	18.05	1
BB S90-C-500	30309050	320×240×12	161-235	500	M16	13.09	1
BB S90-C-750	30309075	320×240×12	161-235	750	M16	16.02	1
BB S90-C-1000	30309010	320×240×12	161-235	1000	M16	18.96	1
BB S90-D-500	30409050	420×240×12	236-300	500	M16	15.34	1
BB S90-D-750	30409075	420×240×12	236-300	750	M16	18.27	1
BB S90-D-1000	30409010	420×240×12	236-300	1000	M16	21.21	1