

Art. 623

Ventilation Duct G-Clamp (Electro-Galvanised)

Application/Advantages

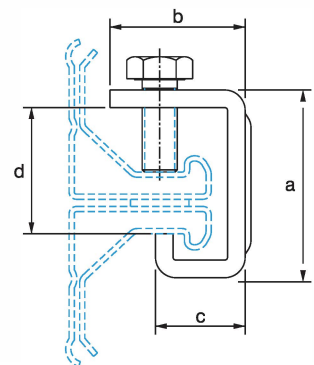
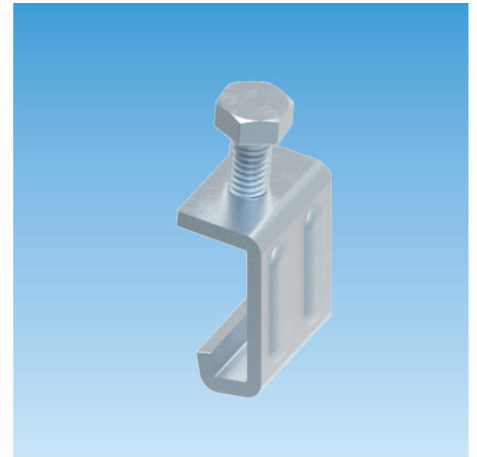
- For connecting formed duct parts. When tightening the bracket, the flanges of the duct parts are pressed against each other.
- Connecting element for large duct cross-sections.
- Double ribbing over bending edges.
- Easy and efficient mounting.

Technical Data

- Material: Steel 1.0332 acc. to DIN EN 10111
- Surface treatment: Electro zinc plated, 8-12 µm
- Screw: 8.8 grade fastening hex head screw

Note

- Maximum load (contact pressure): 1.5KN
- Suitable for use in foodstuffs industry, laboratory applications and outdoors.



Article Number	Type	Material [mm]	Hex.Head Bolt	Dimensions [mm]				[pcs]
				a	b	c	d	
1002 623 001	G Clamp	30x2.5	M8x20	34	18	14	22	100
1002 623 002	G Clamp	30x3.0	M8x20	34	18	14	22	100