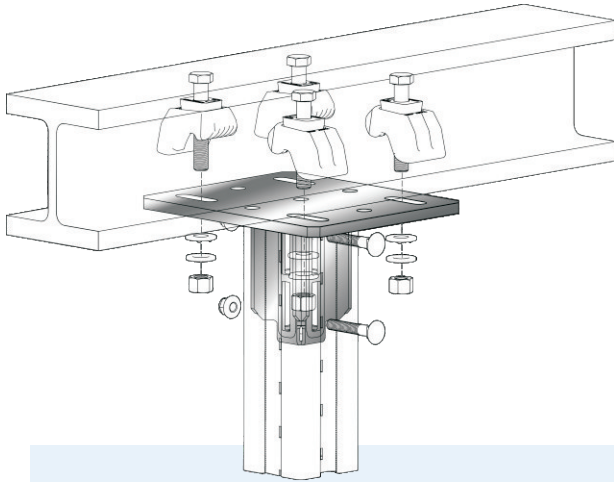


### Beam Connector BC H90

The structural element for accommodation of pipe work and aggregates in industrial construction, plant construction and heavy-duty building technology.



#### The Key Advantages

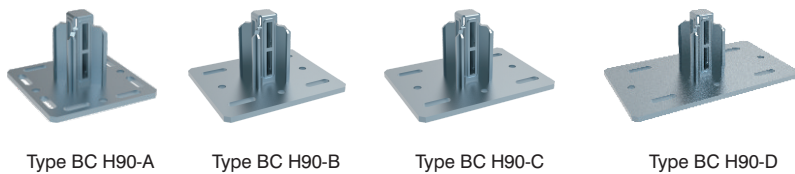
- Ready-to-use element for mounting to traditional steel beams, wall and floor as well as to ceiling, or for assembling crossbars with the respective connecting components.
- Any cut length of the Beam Section can be achieved.
- As a prefabricated cantilever support or beam bracket component to be fixed to steel beam with flange widths between 75-300mm by means of Girder Clamps Type AAF M16

#### Installation

- Depending on the situation, different options are recommended:
- Directly to building structure: 4 × suitable wall anchors and 4 × suitable hexagon nut.
- To traditional steel beams between 80-310mm flange dimensions: With on-demand BP, 4 × Girder Clamps Type AAF 16, 4 × M16 DTI washer (ASME B 18.2.6) and 4 × Hardened steel washer (ASTM F 436)

#### Technical Data

- **Material Composition:**  
Steel S275JR - EN 10025
- **Surface Finish:**  
Hot-dipped galv. 55µm DIN EN ISO 1461



Hardware included per part

x 4 A490    x 4 AAF16    x 4 F959    x 4 F436    x 4 A563

Type	Part-No.	Dimensions of Base Plate [mm]	Beam Section	Slots in Base plate for	Weight [kg/pc]	Pack Size [pcs]
BC H90-A	31409001	240 × 240 × 12	AF S90	M16	7.31	1
BC H90-B	31409002	280 × 240 × 12	AF S90	M16	8.21	1
BC H90-C	31409003	320 × 240 × 12	AF S90	M16	9.12	1
BC H90-D	31409004	420 × 240 × 12	AF S90	M16	11.37	1