

Art. 630

Trapezoidal Sheet Hanger (Electro-Galvanised)

Application/Advantages

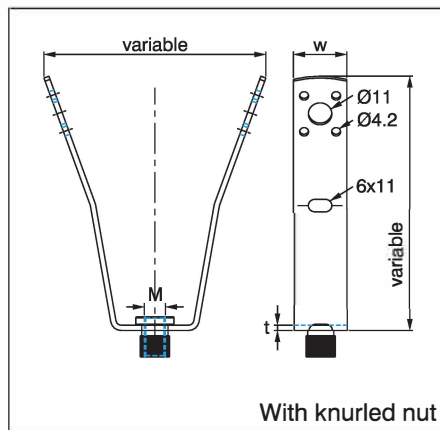
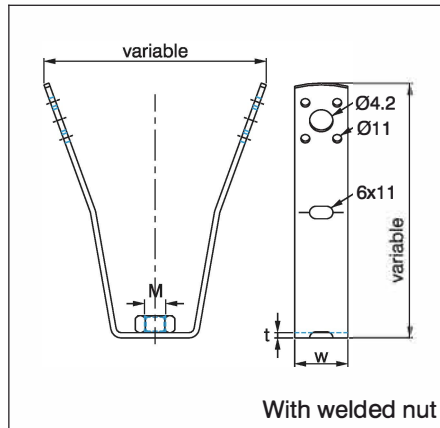
- **Fastening element for installation to trapezoidal section sheet.**
- Target bending point allows for adaptation to any trapezoidal sheeting.
- Fastening by means of push-through mounting with threaded rod M8x100 or hexagon bolts M8x100.
- Also possible with Ø4.0mm AIMg 5 sealing rivets (DIN1725) or 4.2mm drilling screws of case-hardened steel.
- VdS approval (on request) for fastening pipes up to DN50.
- Includes adjustment nut for height adjustment.

Technical Data

- **Material:**
Steel 1.0332 acc. to DIN EN 10111
- **Zinc plating:**
Pre-galvanised acc. to DIN EN 10327

Note

- For mounting sprinkler systems, the use of sheet metal screws or steel blind rivets is **NOT** permitted.
- The maximum permissible load is dependent on the trapezoidal sheet thickness.



Article Number	Type	For Threaded Rod [mm]	Material wxt [mm]	VdS Approved	Pack Size [pcs]	Max. Rec. Load [N]
1002 630 001	W/O welded nut	Ø8.5	25x2.5	—	50	1300
1002 630 002		Ø10.5	25x2.5	—	50	1300
1002 630 003	With welded nut	M8	25x2.5	—	50	1300
1002 630 004		M10	25x2.5	—	50	1300
1002 630 005	With knurled nut	M8	25x2.5	—	50	1300
1002 630 006		M10	25x2.5	—	50	1300

