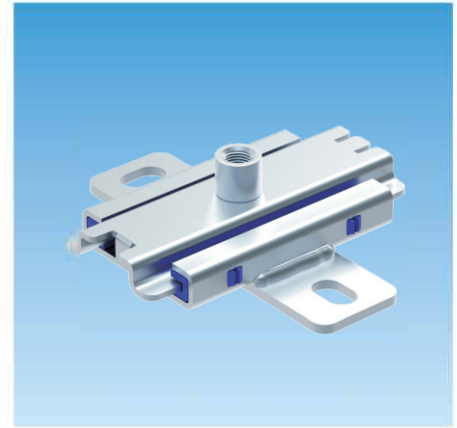
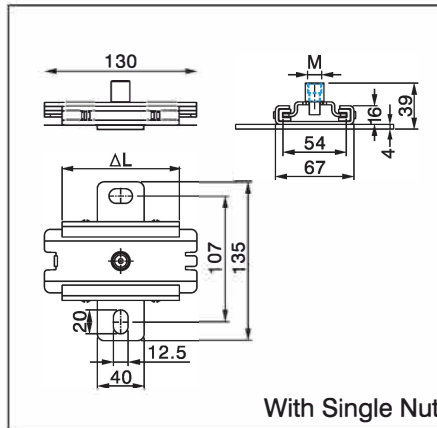


Art. 940

EFIX Light-duty Sliding Guide (For Strut)

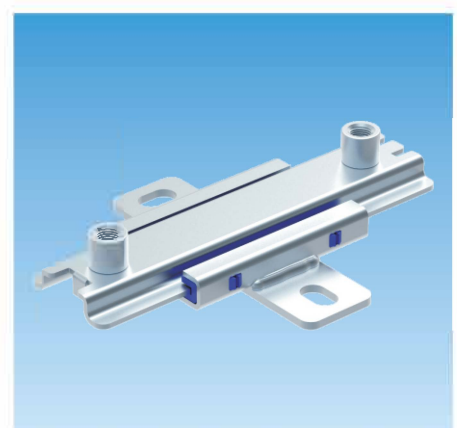
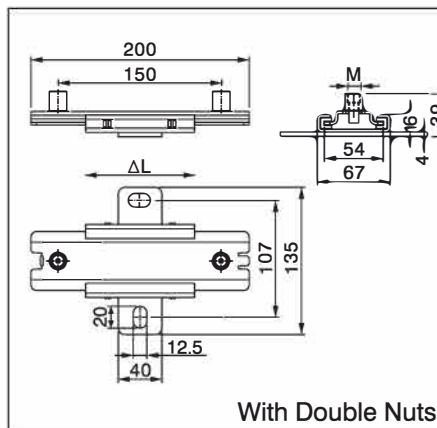
Application/Advantages

- Designed for the suspension of pipe lines that vary in length due to temperature fluctuations.
- Sliding element with a maximum sliding distance of 85mm (or 140mm) for absorbing axial length changes of pipe lines.
- Sound absorption by means of fiberglass reinforced PA slide rails.
- Very low overall height enables use in restricted spaces.



Technical Data

- **Material:**
Steel 1.0332 acc. to DIN EN 10111
Stainless steel, AISI 316(INOX A4),
Also refer to Chapter 13.
- **Zinc plating:**
Electro zinc plated, 8-12 μm
- **Temperature range:**
-40°C to +130°C
- **Static friction coefficient μ₀:**
0.18
- **Sliding friction coefficient μ:**
0.14



Installation

- Install sliding element according to the expected length expansion, so sliding distance is not lost and sliding is not impeded.
- For pipes of NB100 or larger with spacing requirements at a distance from the Sliding Guide, or under conditions of reversed bending stress.



Article Number	Type	Thread M [mm]	Max. sliding distance [mm]	Pack Size [pcs]	Max. Rec. Load [N]	
					Ceiling	Floor
1014 940 001	Single Nut	M10/M12	85	25	800	1500
1014 940 002	Double Nuts	M10/M12	140	25	800	1500