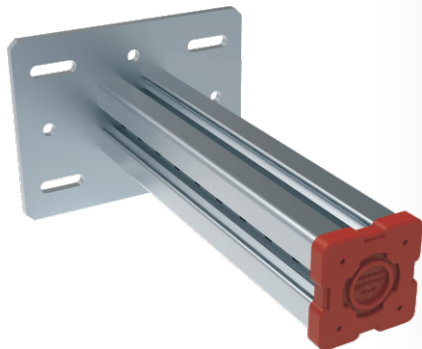


Beam Bracket BB S100

The structural element for accommodation of pipe work and aggregates in industrial construction, plant construction and heavy-duty building technology.



Installation

- Depending on the situation, different options are recommended:
- Directly to building structure: 4×suitable wall anchors and 4×suitable hexagon nut.
- To traditional steel beams between 80-310mm flange dimensions: With on-demand BP, 4×Girder Clamps Type AAF 16, 4×M16 DTI washer(ASME B 18.2.6) and 4× Hardened steel washer(ASTM F 436)

Technical Data

- Material Composition:**
Steel S275JR - EN 10025
- Surface Finish:**
Hot-dipped galv. 55µm
DIN EN ISO 1461

Type	Part-No.	Dimensions of Base Plate [mm]	For Flange Width [mm]	Length L [mm]	Slots in Base plate for	Weight [kg/pc]	Pack Size [pcs]
BB S100-A-500	30110050	240×240×12	75-120	500	M16	14.61	1
BB S100-A-750	30110075	240×240×12	75-120	750	M16	19.21	1
BB S100-A-1000	30110010	240×240×12	75-120	1000	M16	23.81	1
BB S100-B-500	30210050	280×240×12	121-160	500	M16	15.51	1
BB S100-B-750	30210075	280×240×12	121-160	750	M16	20.11	1
BB S100-B-1000	30210010	280×240×12	121-160	1000	M16	24.71	1
BB S100-C-500	30310050	320×240×12	161-235	500	M16	16.42	1
BB S100-C-750	30310075	320×240×12	161-235	750	M16	21.02	1
BB S100-C-1000	30310010	320×240×12	161-235	1000	M16	25.62	1
BB S100-D-500	30410050	420×240×12	236-300	500	M16	18.67	1
BB S100-D-750	30410075	420×240×12	236-300	750	M16	23.27	1
BB S100-D-1000	30410010	420×240×12	236-300	1000	M16	27.87	1