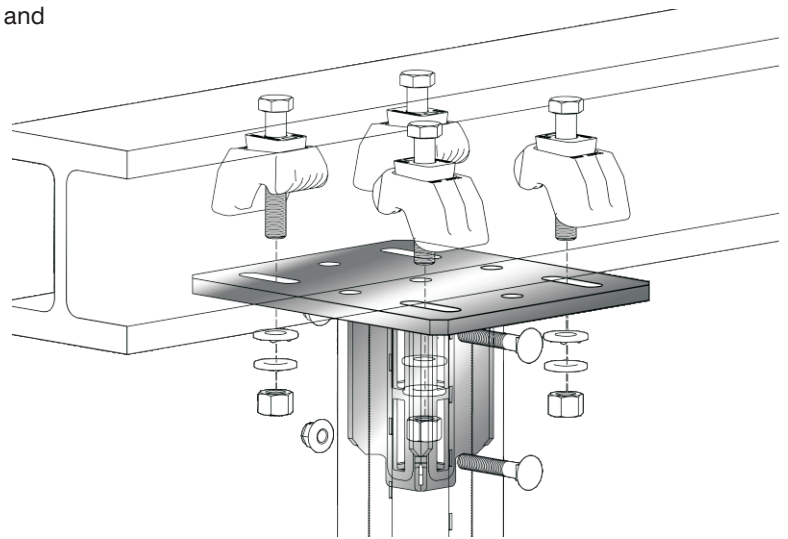


### Beam Connector BC H100

The structural element for accommodation of pipe work and aggregates in industrial construction, plant construction and heavy-duty building technology.



#### The Key Advantages

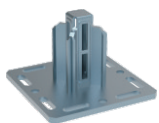
- Ready-to-use element for mounting to traditional steel beams, wall and floor as well as to ceiling, or for assembling crossbars with the respective connecting components.
- Any cut length of the Beam Section can be achieved.
- As a prefabricated cantilever support or beam bracket component to be fixed to steel beam with flange widths between 75-300mm by means of Girder Clamps Type AAF M16

#### Installation

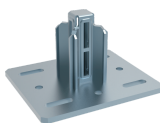
- Depending on the situation, different options are recommended:
- Directly to building structure: 4×suitable wall anchors and 4×suitable hexagon nut.
- To traditional steel beams between 80-310mm flange dimensions: With on-demand BP, 4×Girder Clamps Type AAF 16, 4×M16 DTI washer (ASME B 18.2.6) and 4× Hardened steel washer (ASTM F 436)

#### Technical Data

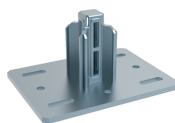
- **Material Composition:**  
Steel S275JR - EN 10025
- **Surface Finish:**  
Hot-dipped galv. 55µm DIN EN ISO 1461



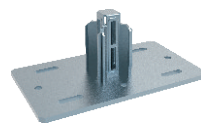
Type BC H100-A



Type BC H100-B



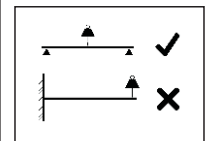
Type BC H100-C



Type BC H100-D

Hardware included per part

x 4 A490    x 4 AAF16    x 4 F959    x 4 F436    x 4 A563



Type	Part-No.	Dimensions of Base Plate [mm]	Beam Section	Slots in Base plate for	Weight [kg/pc]	Pack Size [pcs]
BC H100-A	31410001	240×240×12	AF S100	M16	8.04	1
BC H100-B	31410002	280×240×12	AF S100	M16	8.94	1
BC H100-C	31410003	320×240×12	AF S100	M16	9.85	1
BC H100-D	31410004	420×240×12	AF S100	M16	12.10	1