

Art. 860 & 862 & 864 & 866
Load-Distributing Sleeves (Pre-Galvanised)
Application/Advantages

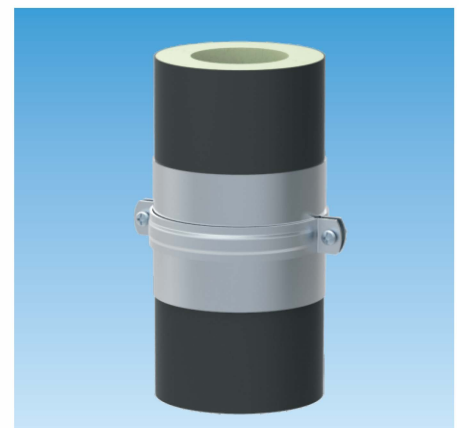
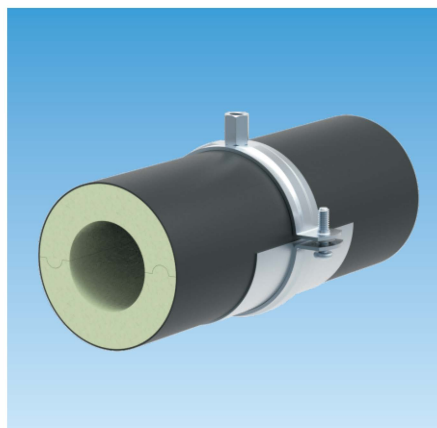
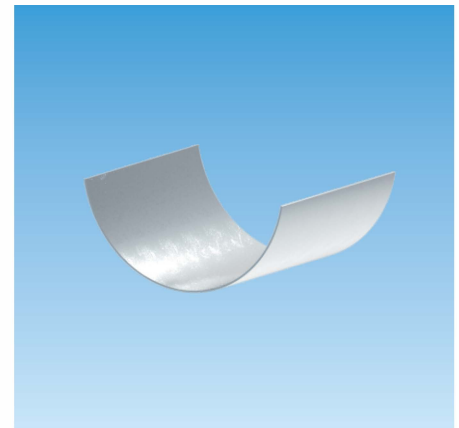
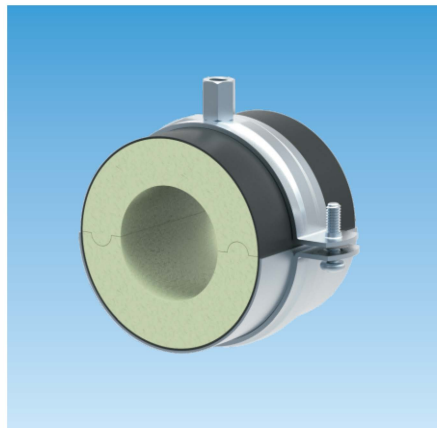
- For large pipe diameters or support spans, it is imperative that insulation clamps with PU inserts are fitted with load-distributing sleeves for improved load distribution.
- **As a principle, use of load-distributing sleeves for pipe diameters > 2" is highly recommended.**

Installation

- Depending on the piping layout, **one** or, for vertical pipes, **two half-sleeves** are needed around the inserts to distribute the load.
- If vapour-tight, overlapped and glued butt joints are required, **100mm-long Load-Distributing Sleeves** should always be combined with PU inserts of 250mm length.

Note

- For Load-Distributing Sleeves in **full-sleeve design**, **one extra piece of Load-Distributing Sleeve** (specify the Article Number) is needed in orders.



Pipe Outer Dia. D		Article Number				Material	Pack Size*
["]	[mm]	20mm insert (1 half sleeve)	30mm insert (1 half sleeve)	40mm insert (1 half sleeve)	50mm insert (1 half sleeve)	[mm]	[pcs]
3/8	17.2	—	0629 862 001	0629 864 001	0629 866 001	75x0.8	—
1/2	21.3	—	0629 862 002	0629 864 002	0629 866 002	75x0.8	—
3/4	26.9	—	0629 862 003	0629 864 003	0629 866 003	75x0.8	—
1	33.7	0629 860 004	0629 862 004	0629 864 004	0629 866 004	75x0.8	—
1-1/4	42.4	0629 860 005	0629 862 005	0629 864 005	0629 866 005	75x0.8	—
1-1/2	48.3	0629 860 006	0629 862 006	0629 864 006	0629 866 006	75x0.8	—
—	57.0	0629 860 007	0629 862 007	0629 864 007	0629 866 007	75x0.8	—
2	60.3	0629 860 008	0629 862 008	0629 864 008	0629 866 008	75x0.8	—
—	70.0	0629 860 009	0629 862 009	0629 864 009	0629 866 009	75x0.8	—
2-1/2	76.1	0629 860 010	0629 862 010	0629 864 010	0629 866 010	75x0.8	—
—	83.0	0629 860 011	0629 862 011	0629 864 011	0629 866 011	75x0.8	—
3	88.9	0629 860 012	0629 862 012	0629 864 012	0629 866 012	75x0.8	—
—	102.0	0629 860 013	0629 862 013	0629 864 013	0629 866 013	100x1.0	—
—	110.0	0629 860 014	0629 862 014	0629 864 014	0629 866 014	100x1.0	—
4	114.3	0629 860 015	0629 862 015	0629 864 015	0629 866 015	100x1.0	—
—	125.0	0629 860 016	0629 862 016	0629 864 016	0629 866 016	100x1.0	—
—	133.0	0629 860 017	0629 862 017	0629 864 017	0629 866 017	100x1.0	—
5	139.7	0629 860 018	0629 862 018	0629 864 018	0629 866 018	100x1.0	—
—	160.0	0629 860 019	0629 862 019	0629 864 019	0629 866 019	100x1.0	—
6	168.3	0629 860 020	0629 862 020	0629 864 020	0629 866 020	100x1.0	—
8	219.1	0629 860 021	0629 862 021	0629 864 021	0629 866 021	100x1.0	—

* Pack sizes are variable depending on customer's orders.