

Art. 525

U-Holder Beam Clamp (For C-Channel/Strut)

Application/Advantages

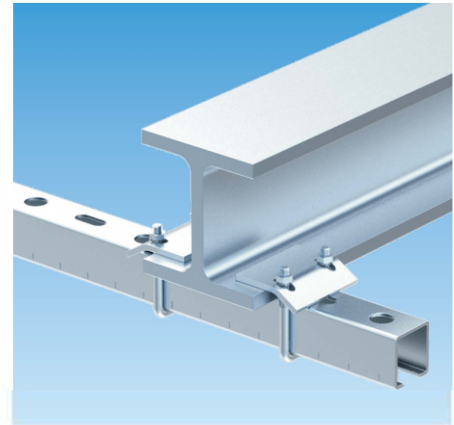
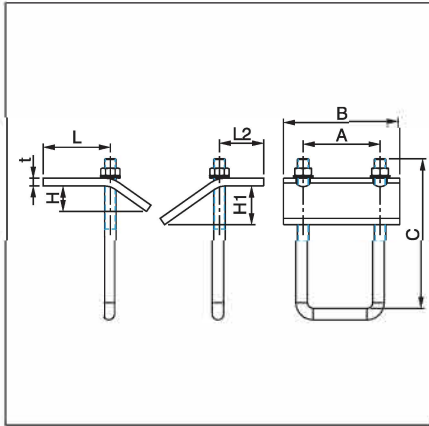
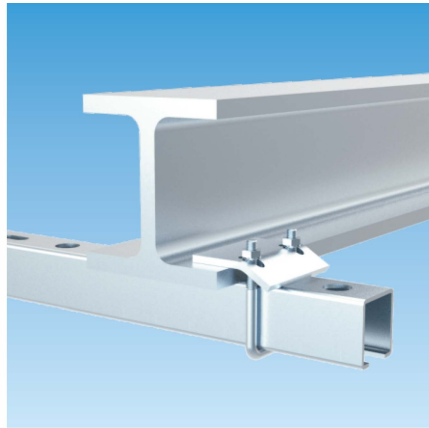
- Ideal solution for fixing C-channel and strut to steel girders.
- For fixing C-channel and strut to steel girders without drilling or welding.
- Subsequent adjustments can be made at any time.
- Suitable for all common girder flange thicknesses.
- Labour cost saving on-site.

Technical Data

- **Material (Metal component):**  
Steel 1.0332 acc. to DIN EN 10111
- **Zinc plating:**  
Electro zinc plated, 8-12 µm

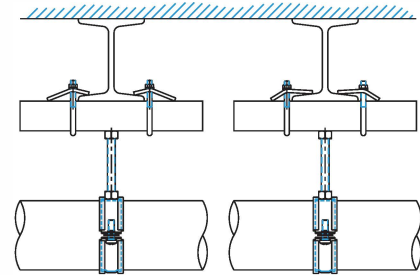
Attention

- Always use two U-Holder beam clamps for fastening when fastening to each steel girder.



Loading Data

For Channel and Strut	Hoop Thread	Max. Rec. Load [N]
27/18, 28/30	M6	2200
38/40	M8	3300
40/60	M8	3300
38/40, 40/60	M10	6000



Article Number	For Channel & Strut	Hoop Thread [mm]	Dimensions [mm]								Pack Size [pcs]
			A	B	C	H1	H2	t	L1	L2	
0531 525 001	27/18,28/30,30/15	M6	37	60	80	29	18	6.0	44	28	25
0531 525 002	38/40	M8	48	70	80	25	17	6.0	38	27	25
0531 525 003	40/60	M8	48	70	100	25	17	6.0	38	27	25
0531 525 004	41/21, 41/41	M10	52	80	80	25	19	6.0	40	31	25
0531 525 005	41/62	M10	50	80	180	25	19	6.0	40	31	25