

Art. 604

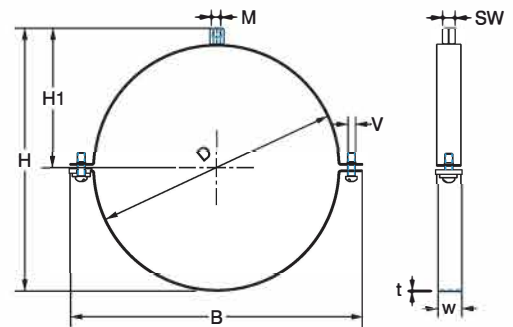
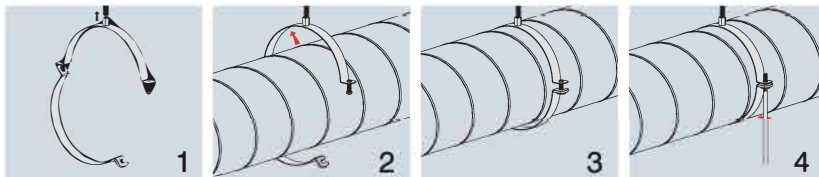
Ventilation Pipe Clamp W/O Lining, **E-ZLock™** Type

Application/Advantages

- **Patented model.**
- Snap closure with special "click-function" to prevent lower half of clamp separating from upper half during installation.
- **Special designed "round stop-edge" to secure the screw in safety lock position without sliding out after the screw is fastened.**
- Swiveling ability of the lower half allows for wide opening.

Technical Data

- Material: Steel 1.0332 acc. to DIN EN 10111
- Zinc plating: Pre-galvanised according to DIN EN 10327



Article Number	Size [mm]	Connecting Thread	Dimensions [mm]						Pack Size [pcs]	Max. Rec. Load [N]
			w x t	B	H	H1	SW	V		
1002 604 071	71	M8	20x1.5	111	82	45	13	M6x25	25	800
1002 604 080	80	M8	20x1.5	120	91	50	13	M6x25	25	800
1002 604 090	90	M8	20x1.5	130	101	55	13	M6x25	25	800
1002 604 100	100	M8	20x1.5	140	111	60	13	M6x25	25	800
1002 604 112	112	M8	20x1.5	152	123	66	13	M6x25	25	800
1002 604 125	125	M8	20x1.5	165	136	72	13	M6x25	25	800
1002 604 140	140	M8	20x1.5	180	151	80	13	M6x25	25	800
1002 604 150	150	M8	20x1.5	190	161	85	13	M6x25	25	800
1002 604 160	160	M8	20x1.5	200	171	90	13	M6x25	25	800
1002 604 180	180	M8	20x1.5	220	191	100	13	M6x25	25	800
1002 604 200	200	M8	20x1.5	240	211	110	13	M6x25	25	800
1002 604 224	224	M8/M10	25x1.5	268	244	131	13	M8x30	10	1000
1002 604 250	250	M8/M10	25x1.5	294	270	144	13	M8x30	10	1000
1002 604 280	280	M8/M10	25x1.5	324	300	159	13	M8x30	10	1000
1002 604 300	300	M8/M10	25x1.5	344	320	169	13	M8x30	10	1000
1002 604 315	315	M8/M10	25x1.5	359	335	176	13	M8x30	10	1000
1002 604 355	355	M8/M10	25x1.5	399	375	196	13	M8x30	10	1000
1002 604 400	400	M8/M10	25x1.5	444	420	219	13	M8x30	10	1000
1002 604 450	450	M8/M10	25x2.5	496	472	245	13	M8x30	10	1200
1002 604 500	500	M8/M10	25x2.5	546	522	270	13	M8x30	10	1200
1002 604 560	560	M8/M10	25x2.5	606	582	300	13	M8x30	10	1200
1002 604 600	600	M8/M10	25x2.5	646	622	320	13	M8x30	10	1200
1002 604 630	630	M8/M10	25x2.5	676	652	335	13	M8x30	10	1200
1002 604 710	710	M8/M10	25x2.5	756	732	375	13	M8x30	10	1200
1002 604 800	800	M8/M10	25x2.5	846	822	420	13	M8x30	10	1200
1002 604 900	900									
1002 604 010	1000									
1002 604 012	1120									

**Note:** We produce E-ZLock Type ventilation pipe clamps in all other pipe sizes and connection boss' subject to request.