

Art. 908

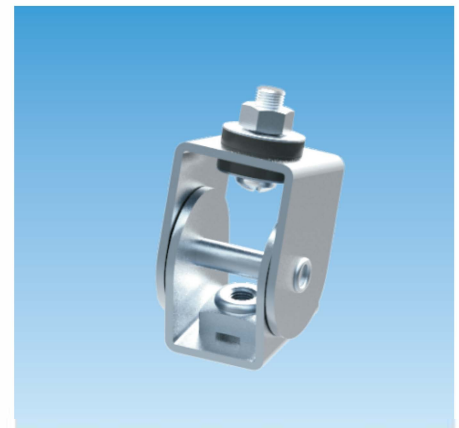
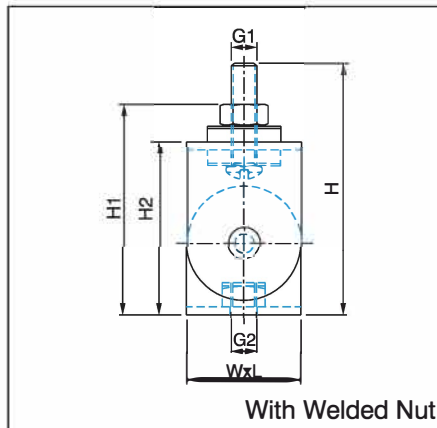
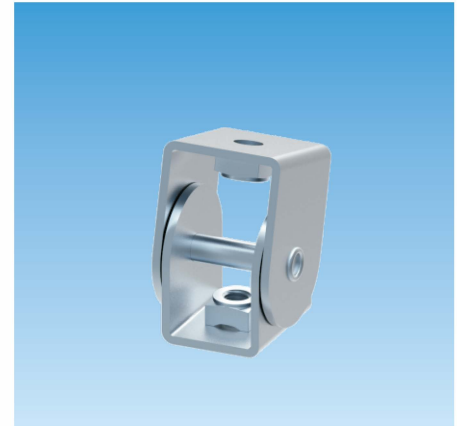
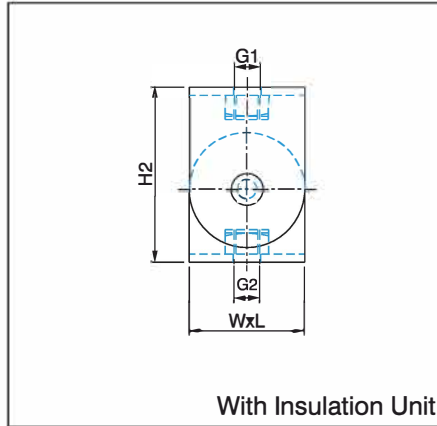
Adjustable Swivel Unit (Electro-Galvanised)

Application/Advantages

- Multi-purpose use in pipeline and system construction works.
- Single-point suspension directly at the ceiling or mounting channel with variable angle adjustment during installation.
- Allows pendulum motion.
- Prevents tensional forces on pipe attachments.
- Very high loading capacities.

Technical Data

- **Material:**
Steel 1.0332 acc. to DIN EN 10111
- **Zinc plating:**
Electro zinc plated, 8-12 μm
- **Sound absorption unit:**
EPDM, black
- **Hardness:**
45°+ / -5° Shore-A
- **Temperature range:**
-50°C to +110°C



Article Number	Type	Dimensions [mm]						Pack Size [pcs]	Max. Rec. Load [N]		
		G1	G2	H2	WxL	H1	H		90°	135°	180°
1014 908 001	With welded nut	M8	M8	45	36x25	60	70	100	—	—	5700
1014 908 002		M8	M10	45	36x25	60	70	100	—	—	5700
1014 908 003	With insulation unit	M8	M8	45	36x25	—	—	100	3500	4500	5500
1014 908 004		M10	M10	45	36x25	—	—	100	3500	4500	5500
1014 908 005		M12	M12	64	36x25	—	—	100	3500	4500	5500

